

# K541 STATIONARY KNUCKLEBOOM LOADER



## OPERATOR COMFORT.

If equipped, the left side mounted cab features a large, fully adjustable suspension seat with lumbar support, fold-up armrest with hydraulic pilot joystick controls, and a foot swing pedal for ease of operation. The improved HVAC system keeps the operator comfortable year-round and is common across all Weiler knuckleboom loaders.



## ON BOARD POWER UNIT.

The on board electric power supply and hydraulics allow for continuous or non-continuous rotation. This configuration also provides a space saving installation as all components are mounted on the loader with only the electrical harnesses routed up through the mounting structure.



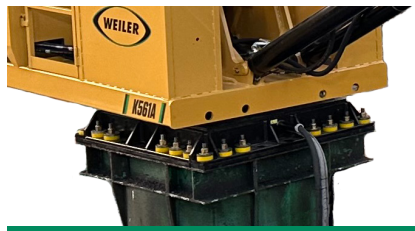
## REMOTE POWER UNIT.

Remote electric power supply and hydraulics are placed on the ground for easier service access to the electric motor, hydraulic pumps and hydraulic valve. Hydraulic hoses are routed up the mounting structure through the center of the loader. Available in limited rotation only.



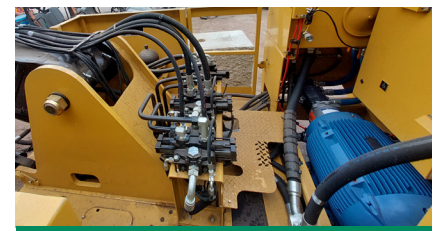
## REMOTE CONTROL OPERATION.

Loaders with optional remote controls are designed with electric over hydraulic (EHC) joysticks with proportional controllers that enable the loader to be operated from a remote location. Specially designed multi-conductor cables ensure reliable signal continuity. All control installation, mounting, and cable routing is the responsibility of the customer.



## RESILIENT PAD MOUNTING.

The Resilient Pad Mounting System includes a set of special rubber isolators on each mounting fastener that absorbs stress in two directions. An additional hydraulic accumulator is built into the main boom cylinder circuit to further absorb peak-load shocks. The main power cable can be routed on any of the four sides or through the center.



## PRODUCT RELIABILITY.

A new swing motor, swing bearing, and cab are common with the K560 and K660 loaders. A larger fan and increased oil cooler capacity results in more cooling efficiency. Electric control valves simplify the design and reduce hose routings. The electrical system has received a complete redesign, modernizing the entire control panel.



# K541 SPECIFICATIONS

<b>ELECTRIC POWER SUPPLY</b>	460 volts: 60 Hz	
<b>ELECTRIC MOTOR POWER</b>	100 hp	75 kW
<b>ELECTRIC MOTOR SPEED</b>	1,800 rpm	
<b>WEIGHT - ON BOARD POWER w/CAB &amp; PILOT CONTROLS</b>	26,300 lb	11 930 kg
<b>WEIGHT - ON BOARD POWER w/REMOTE CONTROLS</b>	27,500 lb	12 474 kg
<b>WEIGHT - REMOTE POWER w/REMOTE CONTROLS</b>	22,900 lb	10 387 kg
<b>WEIGHT - REMOTE POWER UNIT ONLY</b>	4,560 lb	2068 kg

## CONFIGURATIONS

1. On Board Electric Power and Operator's Cab on loader with pilot joystick controls
2. On Board Electric Power and Remote Operator's Station with electric over hydraulic control valves
3. Remote Electric Power and Remote Operator's Station with electric over hydraulic control valves
4. Zero Tail Swing KBL w/ Remote Electric Power and Remote Operator's Station with electric over hydraulic control valves

NOTE: It is the customer's responsibility to provide the remote operator's station and perform the control installation for configurations 2, 3 & 4.

## MOTOR POWER SUPPLY

100 hp (75 kW) @ 1800 rpm electric motor  
460 Volt / 60 Hz Electric Power Supply option  
Direct pump drive through flex coupling  
Magnetic starting system

## HYDRAULICS

Electric valves on remote control units  
Pilot operated valves on cab units  
Common swing motor with K560  
Three in-line gear pumps (45-54-16 gpm (170-204-61 L/min) of flow)  
Thermal and high pressure oil cooler bypass valve  
30% improvement in hydraulic cooling capacity with 5 HP cooling fan  
In-tank hydraulic filter common to other Weiler products

## ELECTRICAL

Weiler machine software  
Weatherproof electrical service panel including circuit breakers  
LED beacon for active status  
Proximity switches for electrical swing stops if equipped

## OTHER STANDARD EQUIPMENT

Central grease bank mounted to main boom frame  
Heavy duty guard rails with large tubing and thick plating  
Resilient Pad Mounting System with rubber isolators  
Mounting bolt pattern compatible w/ Cat 569, Prentice 2410 & Weiler K561

## SALES AND SERVICE

Sold and serviced exclusively through Weiler Forestry dealers worldwide.

<b>SYSTEM PRESSURE</b>	2,500 psi	172 bar
<b>SWING PRESSURE</b>	2,500 psi	172 bar
<b>SWING SPEED</b>	8 rpm	
<b>SWING BEARING DIAMETER (O.D.)</b>	51"	1295 mm
<b>HYDRAULIC RESERVOIR</b>	142 gal	538 L
<b>3 IN-LINE GEAR PUMPS</b>	115 gpm	435 lpm

## OPTIONAL OPERATOR'S CAB

Left mounted cab w/polymer front window & backer bars meet SAE J2267  
19" (483 mm) cab riser option  
CAT excavator or forestry control pattern  
Pressurized with heat and air conditioning  
LED light bars  
Dual pilot joystick controls (foot pedal swing with forestry control pattern)  
Reverse slope tinted windshield  
Windshield wiper  
Lexan skylight with sunshade  
High capacity HVAC system  
AM/FM/Bluetooth radio

## OPTIONAL EQUIPMENT

32' 6" (9.9 m) Standard Boom and Stick  
33' 6" (10.2 m) Live Heel Boom and Stick  
36' (11.0 m) Standard Boom and Stick  
38' 6" (11.7 m) Standard Boom and Stick  
Continuous Swing Rotation with 250A Electrical Swivel  
Limited Swing Rotation with Electrical and Bolt-on Mechanical Swing Stops  
Remote Controls by Another Unit  
Remote Control Harness Options (60', 100', 150', 200', 250', 300')  
Steel Platform Shock Mount kits (8" or 9.5" bolts)  
J-Hook and Hardware for Concrete Base Mounting  
Single "V" or Double "V" Heel  
Phone Holder (Only Available with Cab Option)  
Base Mount Pattern  
Electric Hydraulic Oil Fill Pump  
14 Circuit, 120V, 30A Electrical Swivel (Continuous Rotation Only)  
Hydraulic Tank Heater  
Counterweight  
30" Pedestal Riser  
4548 Straight Narrow Jaw Grapple  
4548 Tapered Wedge Jaw Grapple  
5055 Straight Narrow Jaw Grapple  
5055 Tapered Wedge Jaw Grapple

## WARRANTY

12 months standard. Extended warranty not available.

