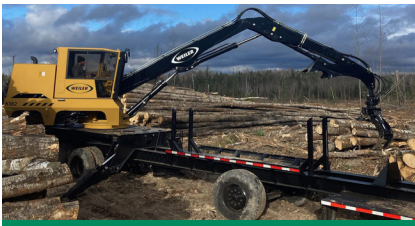


# K562

KNUCKLEBOOM LOADER



## PERFORMANCE BENCHMARK.

The industry leading hydraulic system paired with pilot controlled joysticks are the back bone of the K562 for fast and smooth response time. New, simplified, hose routings and cold oil bypass valve maximize hydraulic system component reliability.



## EASE OF OPERATION.

The Weiler control system uses the standard joysticks for stick steering and propel functionality paired with an additional foot pedal propel feature that allows the boom and stick to be used while traveling. A creep mode allows the carrier to operate at a low speed while in a high gear.



## PRODUCT VERSATILITY.

Bar saw slasher, circle saw slasher, and live heel hydraulic options enhance machine versatility for specialized job applications. Additional options such as an extended boom length, hydraulic tank vacuum pump, and standard side mirrors for maneuvering make the K562 a go-to loader for mill yards.



## IN HOUSE INSTALLATION.

Weiler factory installation of the self propelled ready knuckleboom loader onto customer or dealer supplied carrier allows for full integration with the loader controls and factory testing to ensure maximum quality and functionality.



## ENGINE SIMPLIFICATION.

Stage 5 Cat® engines provide a simplified engine arrangement by reducing engine Electronic Control Modules (ECMs) from 3 to 1, new direct drive fan, and increased horse power for peak performance. Low Diesel Exhaust Fluid (DEF) consumption lowers overall operating costs.



## LINE OF SIGHT.

The fixed cab riser option raises the overall height perspective of the operator. This gives the operator better visibility when stacking high piles, loading or off loading trucks, or loading out rail cars. The riser can be manually folded over if transporting the loader off of a mill yard or other site.

# K562 SPECIFICATIONS

<b>Engine Model</b>	Cat® C4.4 Stage 5	<b>Fuel Capacity</b>	80.0 gal    303 L	<b>Maximum Reach</b>	32' 0"    9.75 m
<b>Gross power</b>	184 hp    137 kW	<b>DEF Capacity</b>	3.2 gal    12 L	<b>Transport Width</b>	8' 6"    2.57 m
<b>Engine Speed</b>	1800 rpm	<b>Swing Torque</b>	49,173 lbf-ft    66 870 N·m	<b>Transport Height</b>	13' 3"    4.04 m
<b>Weight</b>	33,800 lb    15 331 kg	<b>Swing Speed</b>	11 rpm	<b>Transport Length</b>	43'    13.11 m

Base configuration includes standard loader hydraulics and standard boom and stick. All transportation dimensions are of 43' self propelled trailer. Transport dimensions will vary with each carrier manufacturer.

## POWERTRAIN

- Cat® C4.4 engine certified to EPA Stage 5
- Primary and secondary fuel filters, including water separator
- Electric fuel priming and transfer pump
- 2-Stage engine air cleaner
- Oversized cooling system
- Engine auto idle down

## HYDRAULICS

- Excavator style "negacon" pump control system
- Variable displacement pumps
- High performance, multi-functioning main control valve
- Mechanical cold oil bypass
- In-line return
- Electric hydraulic oil fill pump

## OPERATOR ENVIRONMENT

- Enclosed cab with swing out front window guard meeting SAE J2267
- Steel console
- Dual pilot joystick control with foot pedal swing
- Reverse slope tinted windshield and skylight with sunshade
- Two cup holders
- High capacity HVAC system
- Air suspension high back seat
- AM/FM/Bluetooth Radio with 1 x USB port
- 24V to 12V converter, 1 x 12V power port, and 2 x USB ports
- Windshield wiper
- All down stabilizer controls
- Stabilizer movement, pilot arming, and propel alarm
- Integrated carrier controls with foot propel pedal
- Weiler programming system
- Adjustable operator controls

## ELECTRICAL

- 100 ampere alternator
- 24-volt electrical system with 2 x 12-volt batteries
- Main disconnect switch with Diesel Exhaust Fluid (DEF) purge indicator light
- 6 halogen working lights & 1 engine compartment service light
- 4 circuit electric swivel

## SALES AND SERVICE

Sold and serviced exclusively through Weiler Forestry dealers worldwide

[WEILERFORESTRY.COM](http://WEILERFORESTRY.COM)

## OTHER STANDARD EQUIPMENT

- Extreme-duty boom and stick
- Heavy-duty, extended length center mount sub-frame
- Flat top sub-frame deck with bolt-on skid resistant fenders
- Bolt-on sub-frame ladder
- 12" (305 mm) grapple mounting knuckle

## OPTIONAL EQUIPMENT

- Circle Saw Slasher Ready Hydraulics
- 32' 6" Boom & Stick (9.9 m)
- 32' 6" Live Heel Boom & Stick (9.9 m)
- 36' Boom & Stick (11.1 m)
- Extended Single "V" or Double "V" Heels
- 4548 Straight Narrow Jaw Grapple (2 Port Swivel)
- 4548 Tapered Wedge Jaw Grapple (2 Port Swivel)
- 5055 Straight Narrow Jaw Grapple (2 Port Swivel)
- 5055 Tapered Wedge Jaw Grapple (2 Port Swivel)
- Premium Heated & Cooled Seat
- 30" Fold-over Cab Riser (762 mm)
- LED Working Lights
- CB Radio
- Product Link (PL243 Cellular or PL631 Satellite)
- Two Additional Batteries
- Arctic Preheater
- Auxiliary Hydraulic Cooler
- Additional Ladders
- Vacuum Pump
- Bar Saw Slasher Hydraulics
- Bar Saw Slasher Hydraulics Adapters (JIC to ORFS)
- Bar Saw Slasher Hydraulics Adapters w/Shut Off Valves (JIC to ORFS)
- Fire Extinguisher

## WARRANTY

12 months standard, extended warranty available

Materials and specifications are subject to change without notice. Featured machines and photos may include optional equipment. All rights reserved.

K562, SS (10-2023)